

A coastal landscape with a sandy path, grass, and a cloudy sky. The path is made of light-colored sand and leads towards the horizon. The grass is dry and yellowish-brown. The sky is filled with soft, white clouds.

# Outer Dowsing Offshore Wind Plans

## 2.6 Crown Land Plans Onshore

Date: April 2025

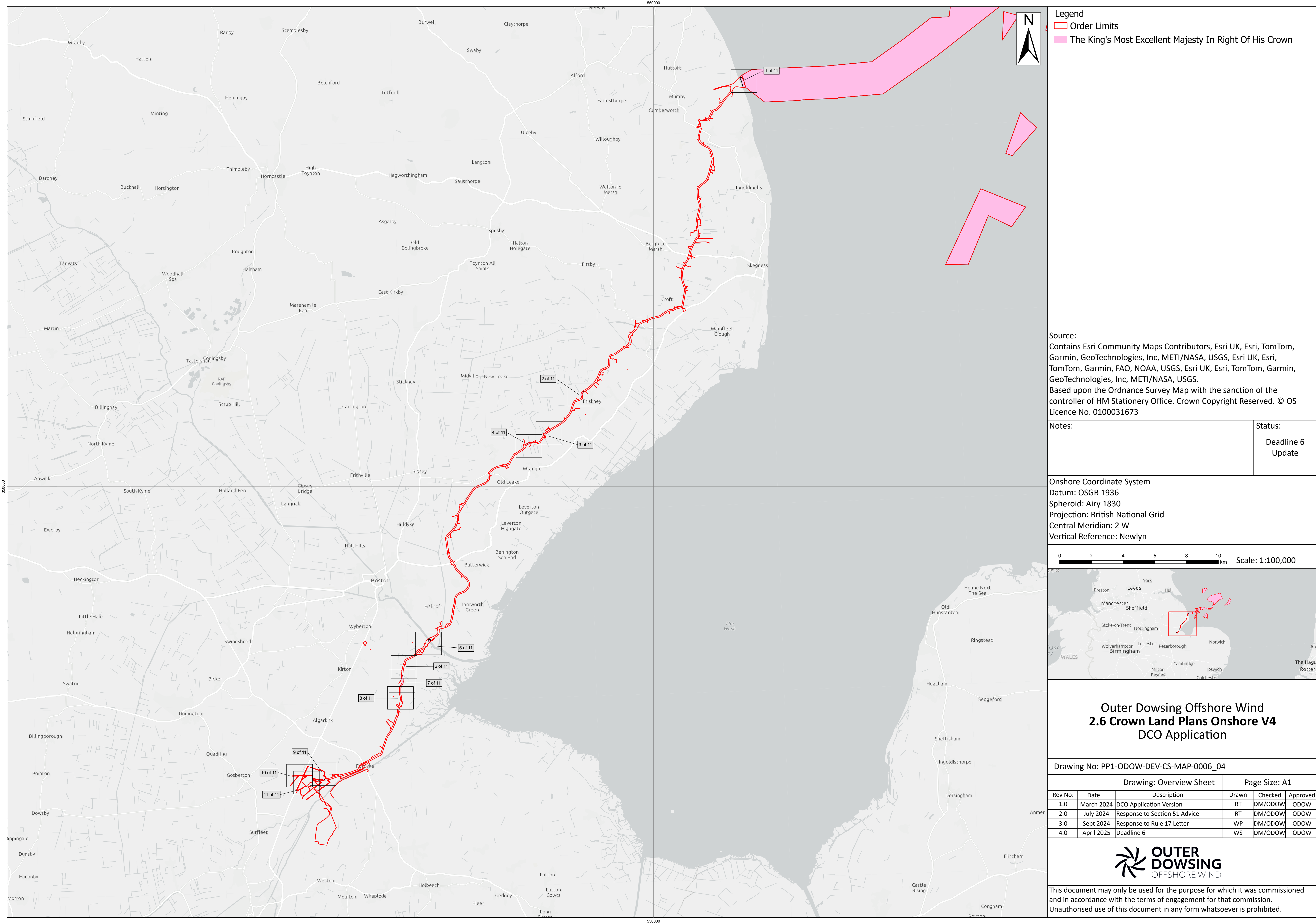
Document Reference: 2.6

Pursuant to APFP Regulation: 5(2)(n)

Rev: 4.0

Company:		Outer Dowsing Offshore Wind		Asset:		Whole Asset	
Project:		Whole Wind Farm		Sub Project/Package:		Whole Asset	
Document Title or Description:		2.6 Crown Land Plans Onshore					
Internal Document Number:		PP1-ODOW-DEV-CS-PLN-0016_04		3 <sup>rd</sup> Party Doc No (If applicable):		N/A	
Rev No.	Date	Status / Reason for Issue	Author	Checked by	Reviewed by	Approved by	
1.0	March 2024	DCO Application	Dalcour Maclaren	Shepherd & Wedderburn	Outer Dowsing	Outer Dowsing	
2.0	July 2024	Response to Section 51 Advice	Dalcour Maclaren	Shepherd & Wedderburn	Outer Dowsing	Outer Dowsing	
3.0	September 2024	Procedural Deadline 19 September	Dalcour Maclaren	Shepherd & Wedderburn	Outer Dowsing	Outer Dowsing	
4.0	April 2025	Deadline 6	Dalcour Maclaren	Shepherd & Wedderburn	Outer Dowsing	Outer Dowsing	





Legend

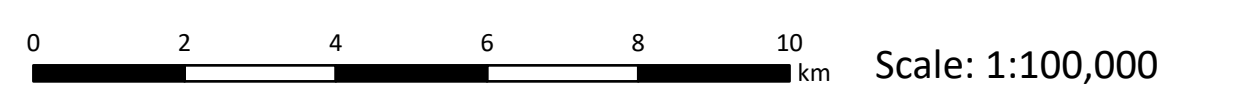
Order Limits

The King's Most Excellent Majesty In Right Of His Crown

Source:  
Contains Esri Community Maps Contributors, Esri UK, Esri, TomTom, Garmin, GeoTechnologies, Inc, METI/NASA, USGS, Esri UK, Esri, TomTom, Garmin, FAO, NOAA, USGS, Esri UK, Esri, TomTom, Garmin, GeoTechnologies, Inc, METI/NASA, USGS.  
Based upon the Ordnance Survey Map with the sanction of the controller of HM Stationery Office. Crown Copyright Reserved. © OS Licence No. 0100031673

Notes:	Status: Deadline 6 Update
--------	------------------------------

Onshore Coordinate System  
Datum: OSGB 1936  
Spheroid: Airy 1830  
Projection: British National Grid  
Central Meridian: 2 W  
Vertical Reference: Newlyn



Outer Dowsing Offshore Wind  
2.6 Crown Land Plans Onshore V4  
DCO Application

Drawing No: PP1-ODOW-DEV-CS-MAP-0006_04			Drawing: Overview Sheet			Page Size: A1		
Rev No:	Date	Description	Drawn	Checked	Approved			
1.0	March 2024	DCO Application Version	RT	DM/ODOW	ODOW			
2.0	July 2024	Response to Section 51 Advice	RT	DM/ODOW	ODOW			
3.0	Sept 2024	Response to Rule 17 Letter	WP	DM/ODOW	ODOW			
4.0	April 2025	Deadline 6	WS	DM/ODOW	ODOW			



This document may only be used for the purpose for which it was commissioned and in accordance with the terms of engagement for that commission.  
Unauthorised use of this document in any form whatsoever is prohibited.



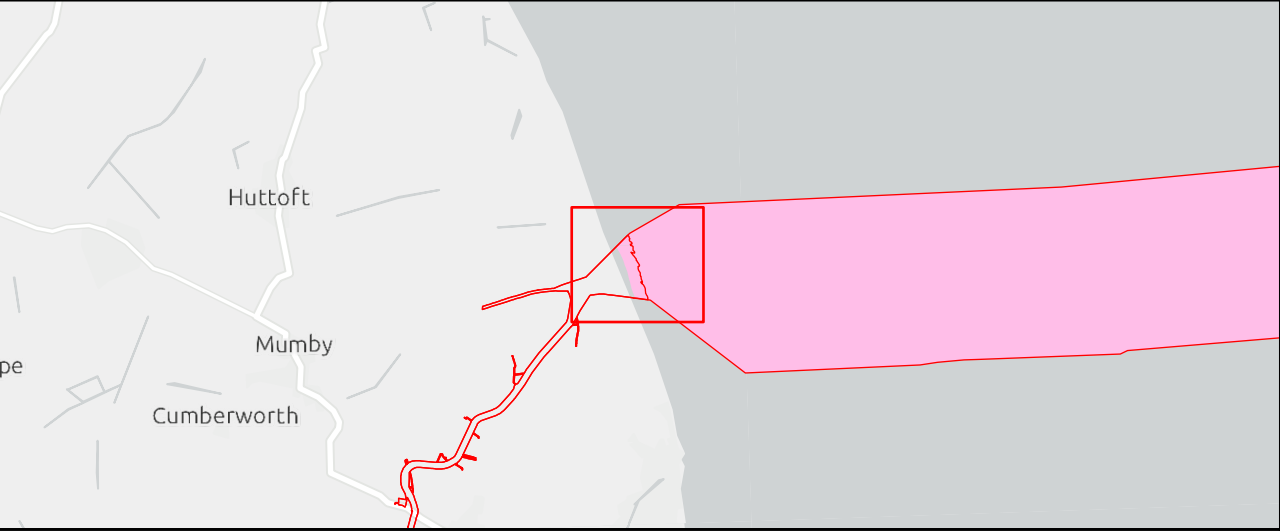
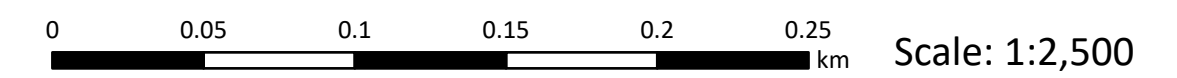


- Legend
- Order Limits
  - The King's Most Excellent Majesty In Right Of His Crown
  - Mean High Water (Springs)
  - Mean Low Water (Springs)

Source:  
Contains Esri Community Maps Contributors, Esri UK, Esri, TomTom, Garmin, GeoTechnologies, Inc, METI/NASA, USGS, Esri UK, Esri, TomTom, Garmin, GeoTechnologies, Inc, METI/NASA, USGS.  
Based upon the Ordnance Survey Map with the sanction of the controller of HM Stationery Office. Crown Copyright Reserved. © OS Licence No. 0100031673

Notes:	Status:
	Deadline 6 Update

Onshore Coordinate System  
Datum: OSGB 1936  
Spheroid: Airy 1830  
Projection: British National Grid  
Central Meridian: 2 W  
Vertical Reference: Newlyn



Outer Dowsing Offshore Wind  
2.6 Crown Land Plans Onshore V4  
DCO Application

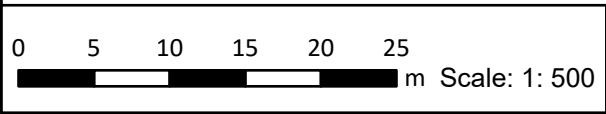
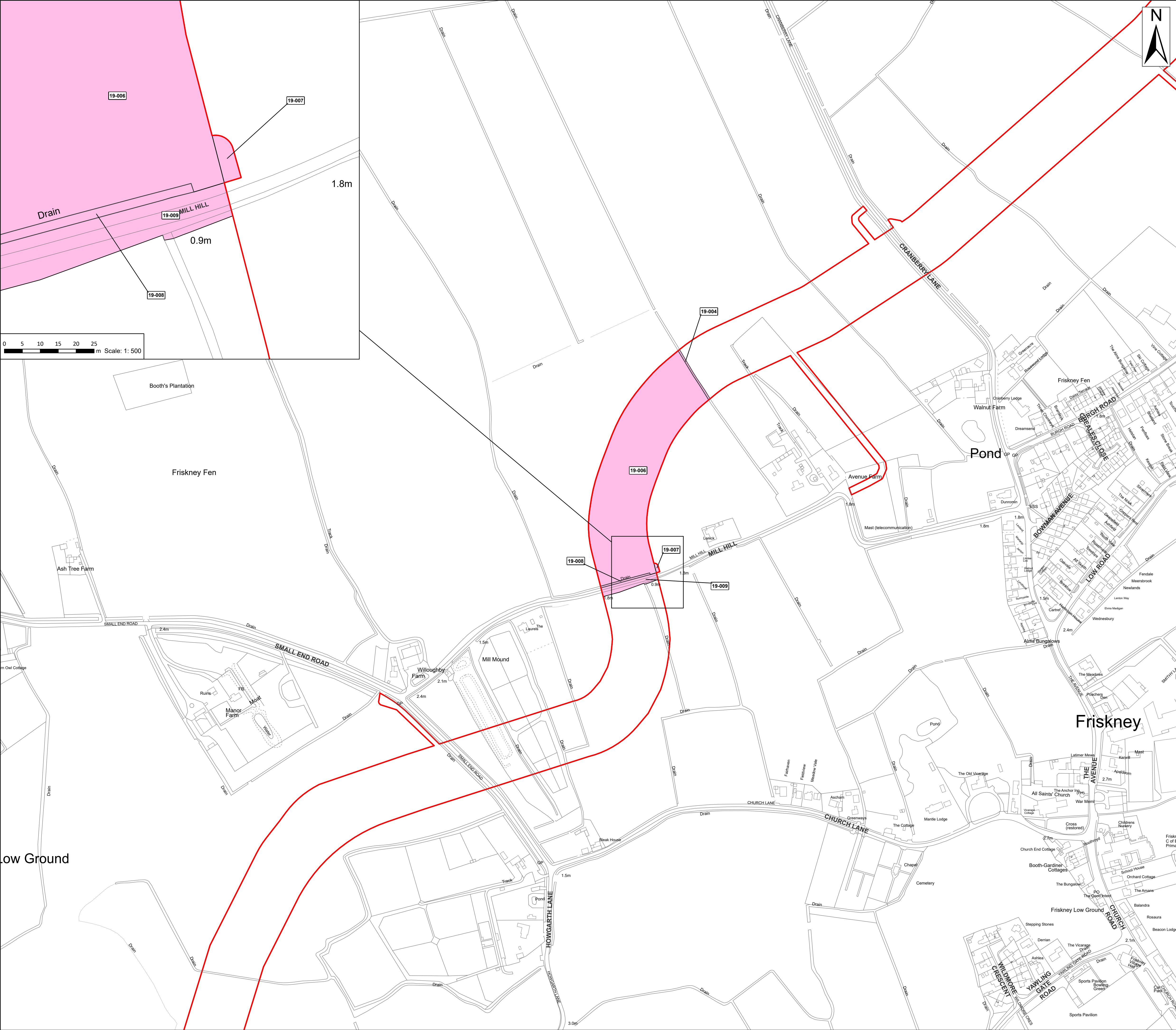
Drawing No: PP1-ODOW-DEV-CS-MAP-0006\_04

Drawing: 1 of 11			Page Size: A1		
Rev No:	Date	Description	Drawn	Checked	Approved
1.0	March 2024	DCO Application Version	RT	DM/ODOW	ODOW
2.0	July 2024	Response to Section 51 Advice	RT	DM/ODOW	ODOW
3.0	Sept 2024	Response to Rule 17 Letter	WP	DM/ODOW	ODOW
4.0	April 2025	Deadline 6	WS	DM/ODOW	ODOW



This document may only be used for the purpose for which it was commissioned and in accordance with the terms of engagement for that commission. Unauthorised use of this document in any form whatsoever is prohibited.





Legend

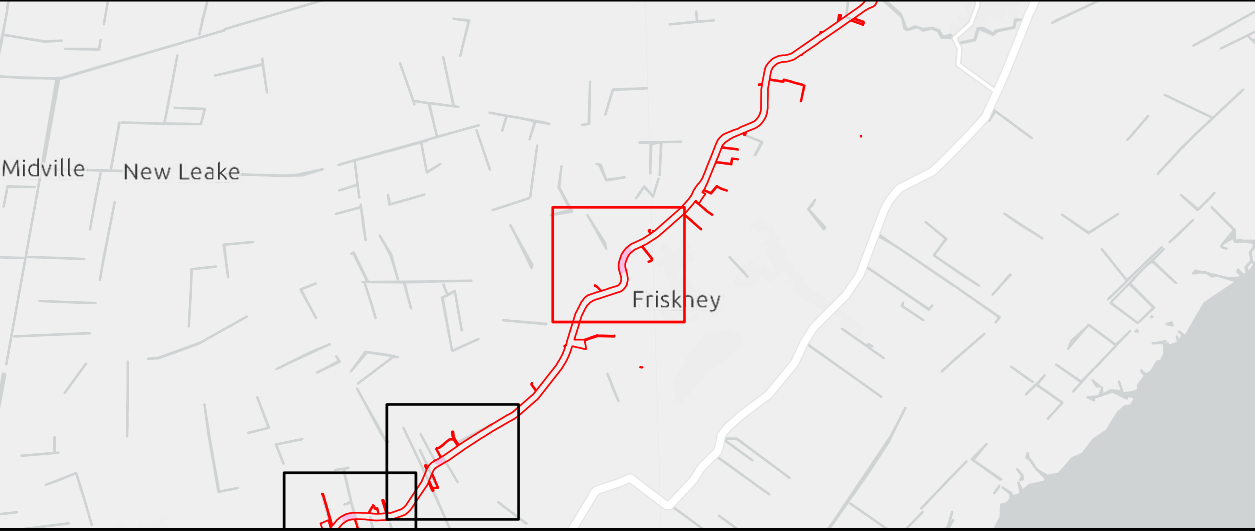
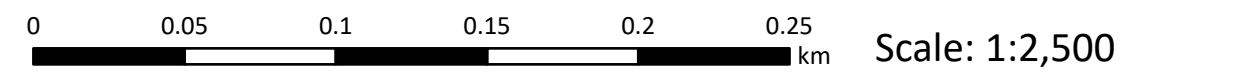
Order Limits

The King's Most Excellent Majesty In Right Of His Crown

Source:  
Contains Esri Community Maps Contributors, Esri UK, Esri, TomTom, Garmin, GeoTechnologies, Inc, METI/NASA, USGS, Esri UK, Esri, TomTom, Garmin, GeoTechnologies, Inc, METI/NASA, USGS.  
Based upon the Ordnance Survey Map with the sanction of the controller of HM Stationery Office. Crown Copyright Reserved. © OS Licence No. 0100031673

Notes:	Status: Deadline 6 Update
--------	------------------------------

Onshore Coordinate System  
Datum: OSGB 1936  
Spheroid: Airy 1830  
Projection: British National Grid  
Central Meridian: 2 W  
Vertical Reference: Newlyn



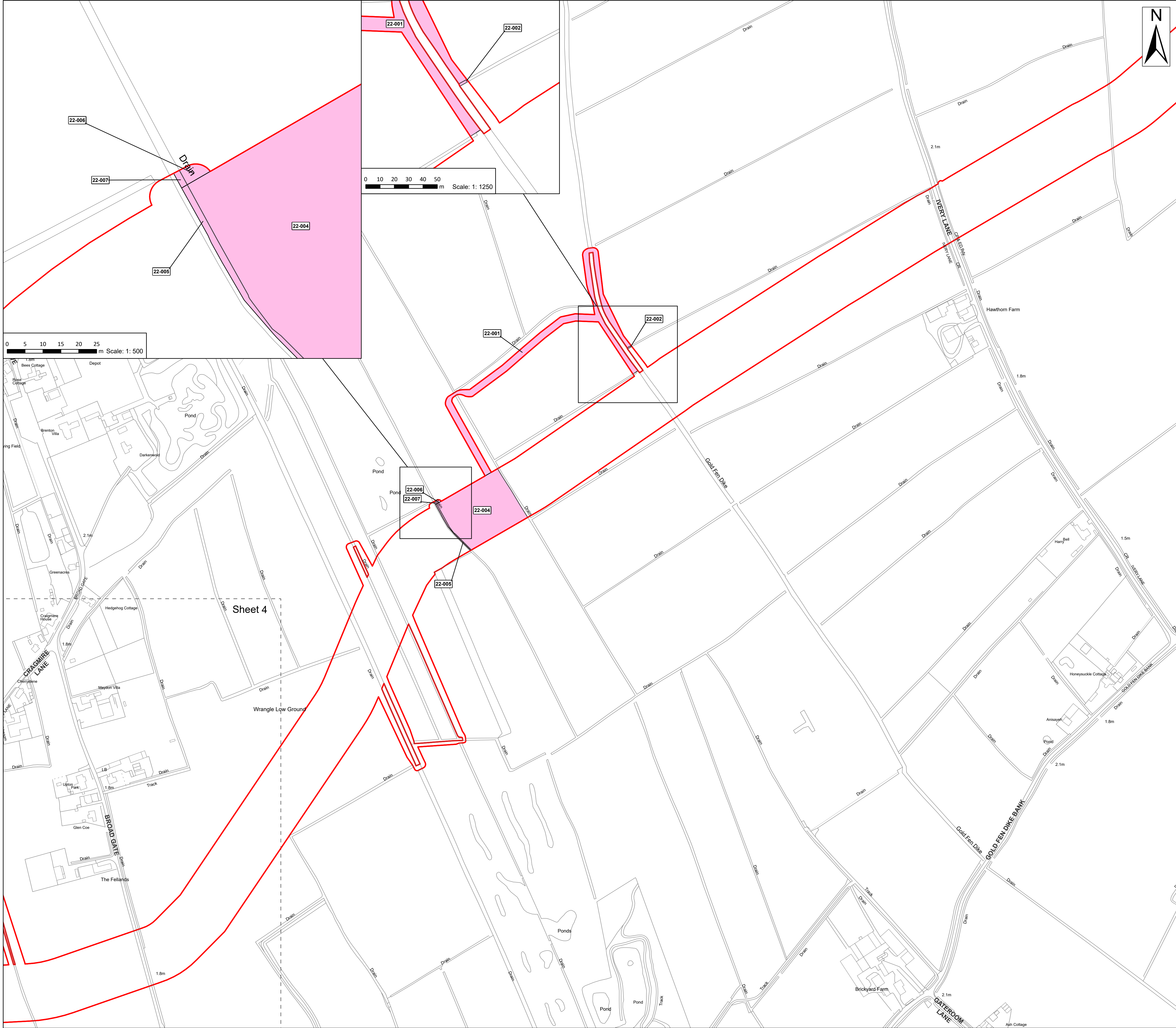
Outer Dowsing Offshore Wind  
2.6 Crown Land Plans Onshore V4  
DCO Application

Drawing No: PP1-ODOW-DEV-CS-MAP-0006_04			Drawing: 2 of 11			Page Size: A1		
Rev No:	Date	Description	Drawn	Checked	Approved			
1.0	March 2024	DCO Application Version	RT	DM/ODOW	ODOW			
2.0	July 2024	Response to Section 51 Advice	RT	DM/ODOW	ODOW			
3.0	Sept 2024	Response to Rule 17 Letter	WP	DM/ODOW	ODOW			
4.0	April 2025	Deadline 6	WS	DM/ODOW	ODOW			



This document may only be used for the purpose for which it was commissioned and in accordance with the terms of engagement for that commission. Unauthorised use of this document in any form whatsoever is prohibited.





Legend

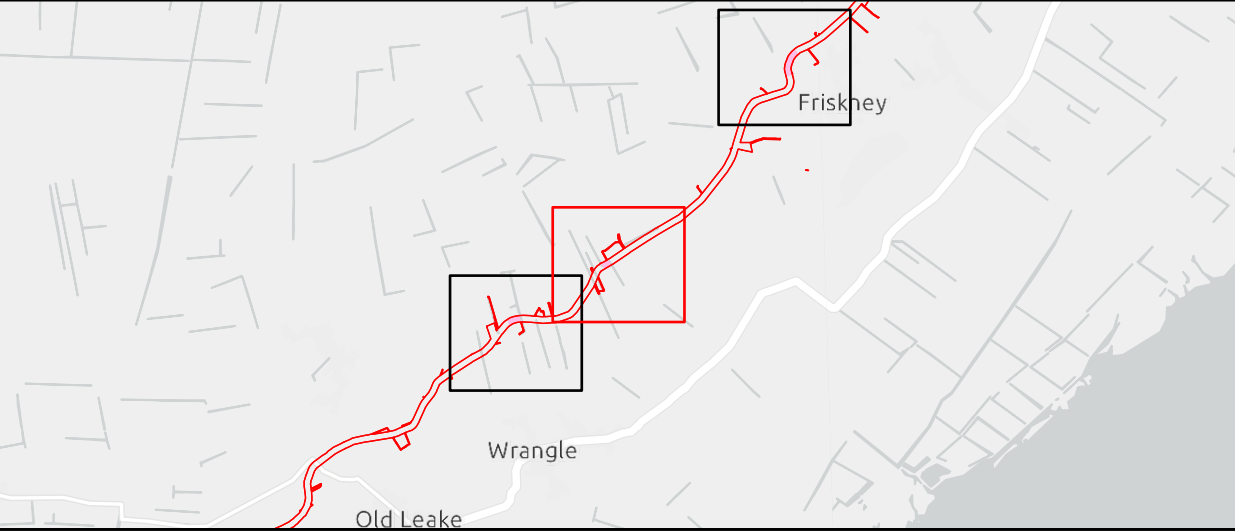
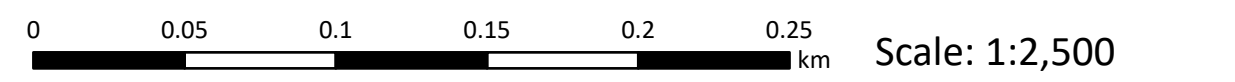
Order Limits

The King's Most Excellent Majesty In Right Of His Crown

Source:  
Contains Esri Community Maps Contributors, Esri UK, Esri, TomTom, Garmin, GeoTechnologies, Inc, METI/NASA, USGS, Esri UK, Esri, TomTom, Garmin, GeoTechnologies, Inc, METI/NASA, USGS.  
Based upon the Ordnance Survey Map with the sanction of the controller of HM Stationery Office. Crown Copyright Reserved. © OS Licence No. 0100031673

Notes:	Status:
	Deadline 6 Update

Onshore Coordinate System  
Datum: OSGB 1936  
Spheroid: Airy 1830  
Projection: British National Grid  
Central Meridian: 2 W  
Vertical Reference: Newlyn



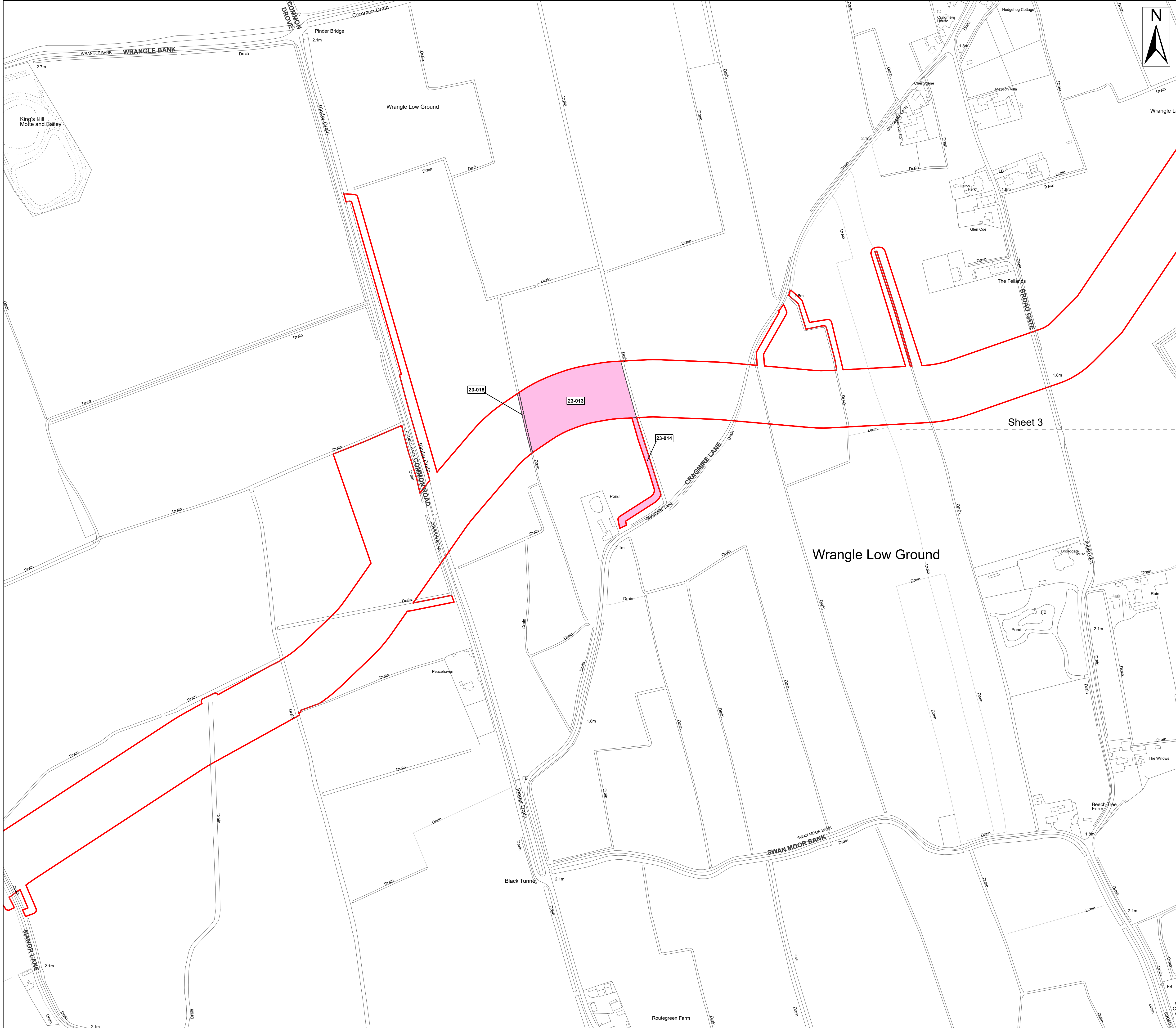
Outer Dowsing Offshore Wind  
2.6 Crown Land Plans Onshore V4  
DCO Application

Drawing No: PP1-ODOW-DEV-CS-MAP-0006_04			Drawing: 3 of 11			Page Size: A1		
Rev No:	Date	Description	Drawn	Checked	Approved			
1.0	March 2024	DCO Application Version	RT	DM/ODOW	ODOW			
2.0	July 2024	Response to Section 51 Advice	RT	DM/ODOW	ODOW			
3.0	Sept 2024	Response to Rule 17 Letter	WP	DM/ODOW	ODOW			
4.0	April 2025	Deadline 6	WS	DM/ODOW	ODOW			



This document may only be used for the purpose for which it was commissioned and in accordance with the terms of engagement for that commission.  
Unauthorised use of this document in any form whatsoever is prohibited.





Order Limits

The King's Most Excellent Majesty In Right Of His Crown

N

Source:

Contains Esri Community Maps Contributors, Esri UK, Esri, TomTom, Garmin, GeoTechnologies, Inc, METI/NASA, USGS, Esri UK, Esri, TomTom, Garmin, GeoTechnologies, Inc, METI/NASA, USGS. Based upon the Ordnance Survey Map with the sanction of the controller of HM Stationery Office. Crown Copyright Reserved. © OS Licence No. 0100031673

Notes:

Status:

Deadline 6 Update

Onshore Coordinate System  
Datum: OSGB 1936  
Spheroid: Airy 1830  
Projection: British National Grid  
Central Meridian: 2 W  
Vertical Reference: Newlyn

00.050.10.150.20.25

km

Scale: 1:2,500

Outer Dowsing Offshore Wind

2.6 Crown Land Plans Onshore V4

DCO Application

Drawing No: PP1-ODOW-DEV-CS-MAP-0006\_04

Drawing: 4 of 11

Page Size: A1

Rev No:	Date	Description	Drawn	Checked	Approved
1.0	March 2024	DCO Application Version	RT	DM/ODOW	ODOW
2.0	July 2024	Response to Section 51 Advice	RT	DM/ODOW	ODOW
3.0	Sept 2024	Response to Rule 17 Letter	WP	DM/ODOW	ODOW
4.0	April 2025	Deadline 6	WS	DM/ODOW	ODOW

OUTER DOWSING

OFFSHORE WIND

This document may only be used for the purpose for which it was commissioned and in accordance with the terms of engagement for that commission. Unauthorised use of this document in any form whatsoever is prohibited.



Legend

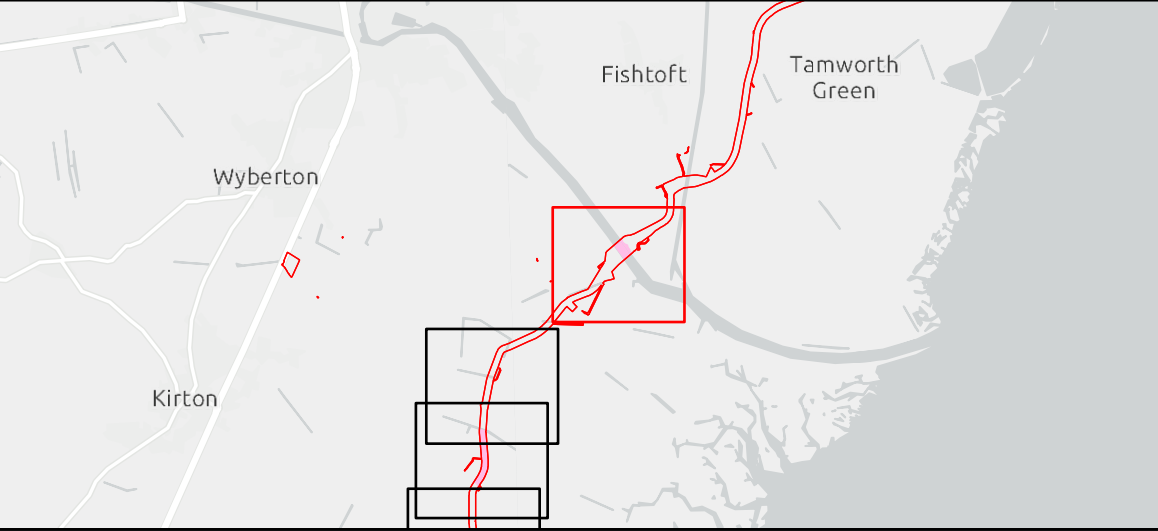
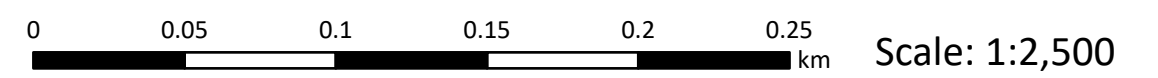
Order Limits

The King's Most Excellent Majesty In Right Of His Crown

Source:  
Contains Esri Community Maps Contributors, Esri UK, Esri, TomTom, Garmin, GeoTechnologies, Inc, METI/NASA, USGS, Esri UK, Esri, TomTom, Garmin, GeoTechnologies, Inc, METI/NASA, USGS.  
Based upon the Ordnance Survey Map with the sanction of the controller of HM Stationery Office. Crown Copyright Reserved. © OS Licence No. 0100031673

Notes:	Status: Deadline 6 Update
--------	------------------------------

Onshore Coordinate System  
Datum: OSGB 1936  
Spheroid: Airy 1830  
Projection: British National Grid  
Central Meridian: 2 W  
Vertical Reference: Newlyn



Outer Dowsing Offshore Wind  
2.6 Crown Land Plans Onshore V4  
DCO Application

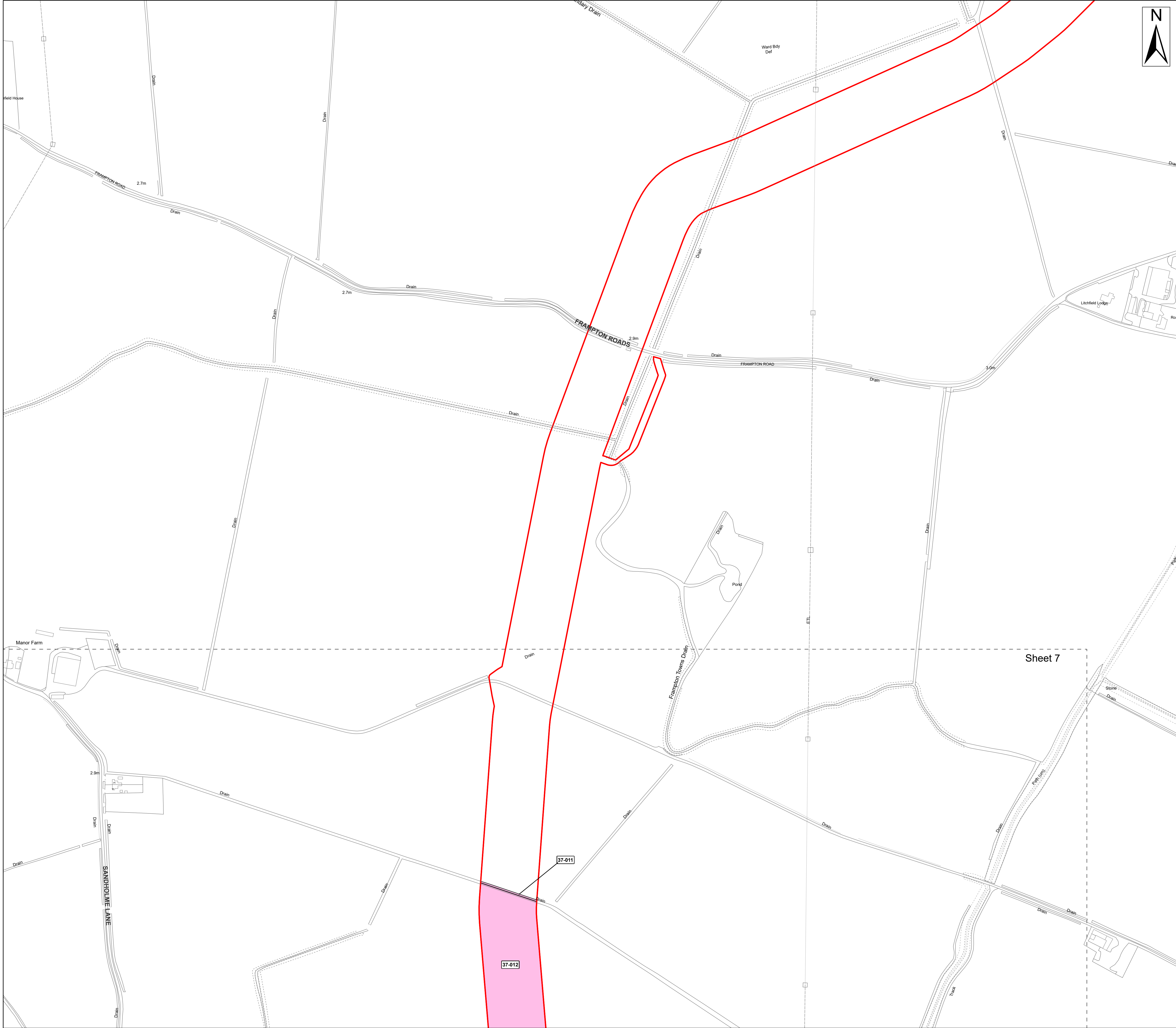
Drawing No: PP1-ODOW-DEV-CS-MAP-0006\_04

Drawing: 5 of 11			Page Size: A1		
Rev No:	Date	Description	Drawn	Checked	Approved
1.0	March 2024	DCO Application Version	RT	DM/ODOW	ODOW
2.0	July 2024	Response to Section 51 Advice	RT	DM/ODOW	ODOW
3.0	Sept 2024	Response to Rule 17 Letter	WP	DM/ODOW	ODOW
4.0	April 2025	Deadline 6	WS	DM/ODOW	ODOW



This document may only be used for the purpose for which it was commissioned and in accordance with the terms of engagement for that commission.  
Unauthorised use of this document in any form whatsoever is prohibited.



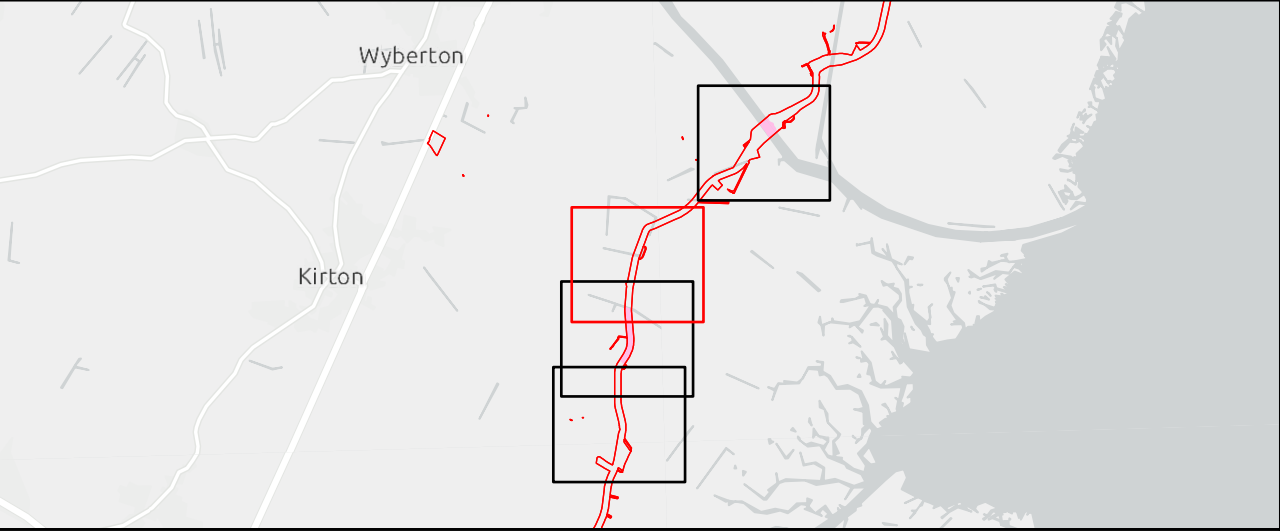
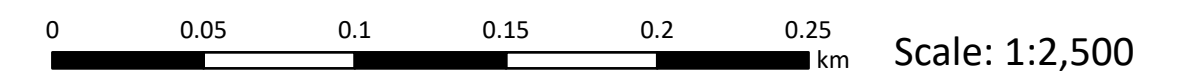


- Legend
- Order Limits
  - The King's Most Excellent Majesty In Right Of His Crown

Source:  
Contains Esri Community Maps Contributors, Esri UK, Esri, TomTom, Garmin, GeoTechnologies, Inc, METI/NASA, USGS, Esri UK, Esri, TomTom, Garmin, GeoTechnologies, Inc, METI/NASA, USGS.  
Based upon the Ordnance Survey Map with the sanction of the controller of HM Stationery Office. Crown Copyright Reserved. © OS Licence No. 0100031673

Notes:	Status:
	Deadline 6 Update

Onshore Coordinate System  
Datum: OSGB 1936  
Spheroid: Airy 1830  
Projection: British National Grid  
Central Meridian: 2 W  
Vertical Reference: Newlyn



Outer Dowsing Offshore Wind  
2.6 Crown Land Plans Onshore V4  
DCO Application

Drawing No: PP1-ODOW-DEV-CS-MAP-0006\_04

Drawing: 6 of 11			Page Size: A1		
Rev No:	Date	Description	Drawn	Checked	Approved
1.0	March 2024	DCO Application Version	RT	DM/ODOW	ODOW
2.0	July 2024	Response to Section 51 Advice	RT	DM/ODOW	ODOW
3.0	Sept 2024	Response to Rule 17 Letter	WP	DM/ODOW	ODOW
4.0	April 2025	Deadline 6	WS	DM/ODOW	ODOW



This document may only be used for the purpose for which it was commissioned and in accordance with the terms of engagement for that commission. Unauthorised use of this document in any form whatsoever is prohibited.

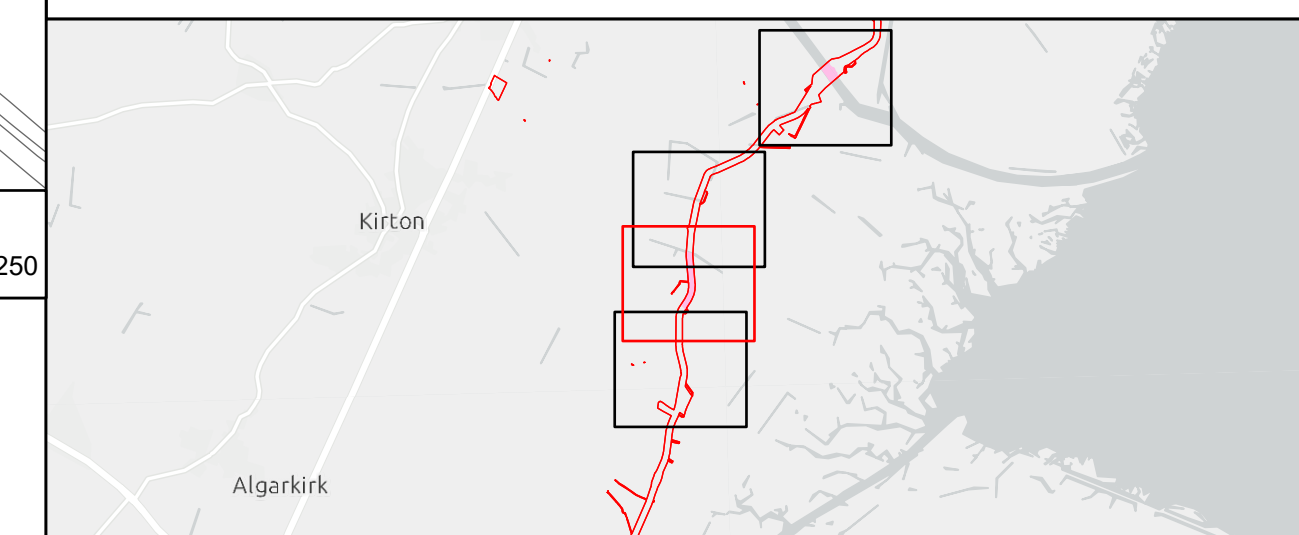
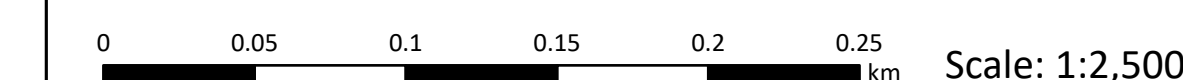




Source:  
Contains Esri Community Maps Contributors, Esri UK, Esri, TomTom,  
Garmin, GeoTechnologies, Inc, METI/NASA, USGS, Esri UK, Esri,  
TomTom, Garmin, GeoTechnologies, Inc, METI/NASA, USGS.  
Based upon the Ordnance Survey Map with the sanction of the  
controller of HM Stationery Office. Crown Copyright Reserved. © OS  
Licence No. 0100031673

Notes:	Status:
	Deadline Update

Onshore Coordinate System
Datum: OSGB 1936
Spheroid: Airy 1830
Projection: British National Grid
Central Meridian: 2 W
Vertical Reference: Newlyn



## Outer Dowsing Offshore Wind 2.6 Crown Land Plans Onshore V4 DCO Application

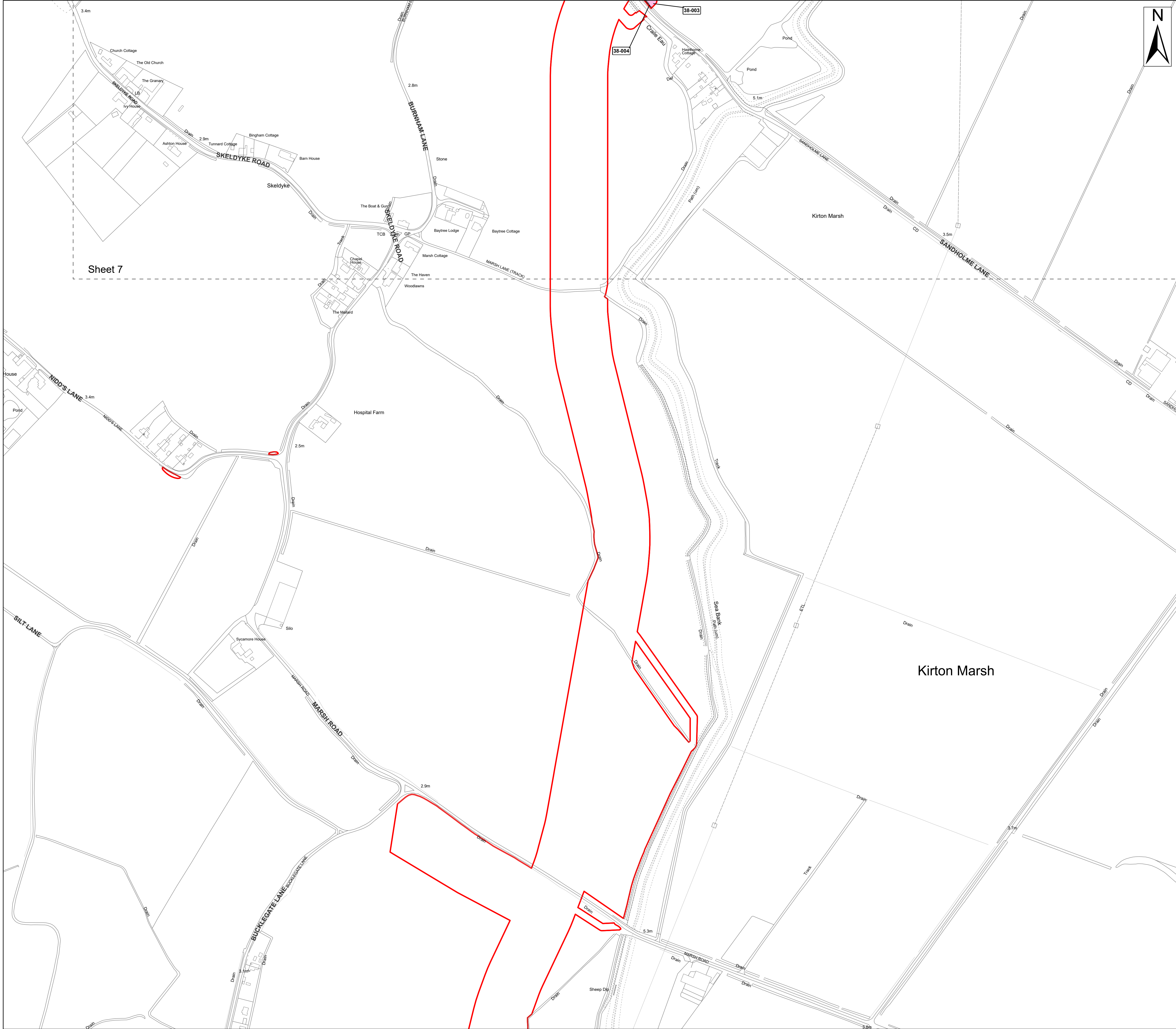
Drawing No: PP1-ODOW-DEV-CS-MAP-0006\_04

Drawing: 7 of 11			Page Size: A1		
Rev No:	Date	Description	Drawn	Checked	Approved
1.0	March 2024	DCO Application Version	RT	DM/ODOW	ODOW
2.0	July 2024	Response to Section 51 Advice	RT	DM/ODOW	ODOW
3.0	Sept 2024	Response to Rule 17 Letter	WP	DM/ODOW	ODOW
4.0	April 2025	Deadline 6	WS	DM/ODOW	ODOW



This document may only be used for the purpose for which it was commissioned and in accordance with the terms of engagement for that commission. Unauthorised use of this document in any form whatsoever is prohibited.





Legend

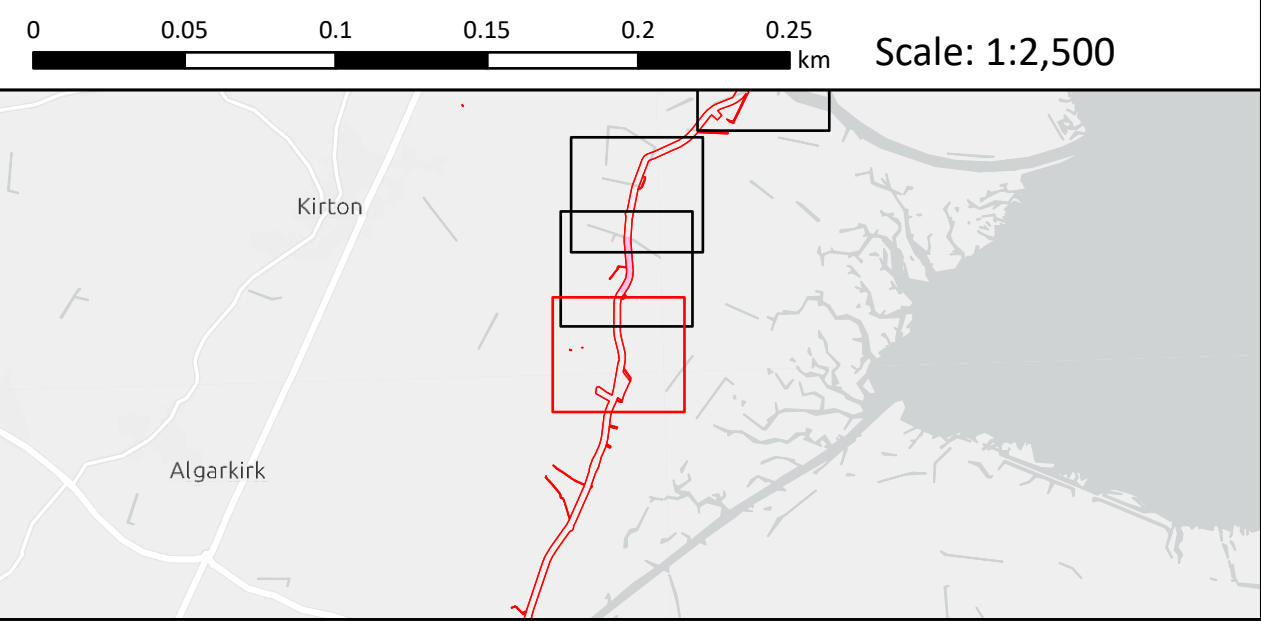
Order Limits

The King's Most Excellent Majesty In Right Of His Crown

Source:  
Contains Esri Community Maps Contributors, Esri UK, Esri, TomTom, Garmin, GeoTechnologies, Inc, METI/NASA, USGS, Esri UK, Esri, TomTom, Garmin, GeoTechnologies, Inc, METI/NASA, USGS.  
Based upon the Ordnance Survey Map with the sanction of the controller of HM Stationery Office. Crown Copyright Reserved. © OS Licence No. 0100031673

Notes:	Status:
	Deadline 6 Update

Onshore Coordinate System  
Datum: OSGB 1936  
Spheroid: Airy 1830  
Projection: British National Grid  
Central Meridian: 2 W  
Vertical Reference: Newlyn



Outer Dowsing Offshore Wind  
2.6 Crown Land Plans Onshore V4  
DCO Application

Drawing No: PP1-ODOW-DEV-CS-MAP-0006_04			Drawing: 8 of 11		Page Size: A1	
Rev No:	Date	Description	Drawn	Checked	Approved	
1.0	March 2024	DCO Application Version	RT	DM/ODOW	ODOW	
2.0	July 2024	Response to Section 51 Advice	RT	DM/ODOW	ODOW	
3.0	Sept 2024	Response to Rule 17 Letter	WP	DM/ODOW	ODOW	
4.0	April 2025	Deadline 6	WS	DM/ODOW	ODOW	



This document may only be used for the purpose for which it was commissioned and in accordance with the terms of engagement for that commission. Unauthorised use of this document in any form whatsoever is prohibited.





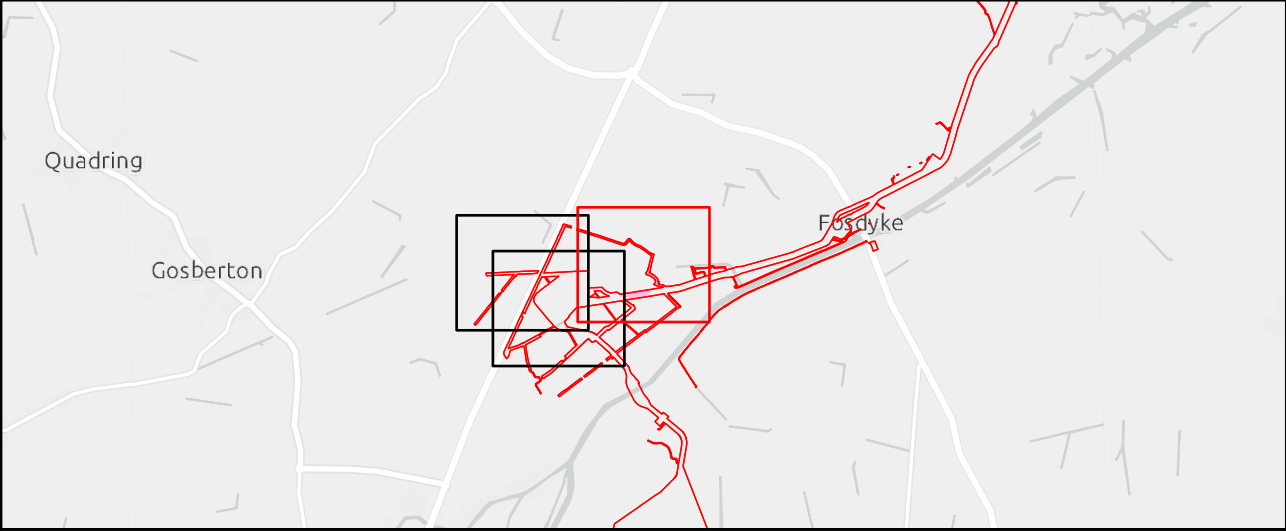
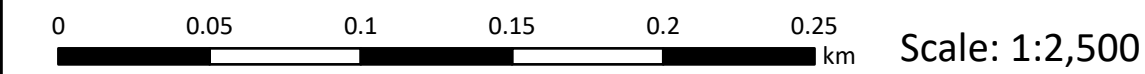
- Legend
- Order Limits
  - The King's Most Excellent Majesty In Right Of His Crown

Source:  
Contains Esri Community Maps Contributors, Esri UK, Esri, TomTom, Garmin, GeoTechnologies, Inc, METI/NASA, USGS, Esri UK, Esri, TomTom, Garmin, GeoTechnologies, Inc, METI/NASA, USGS.  
Based upon the Ordnance Survey Map with the sanction of the controller of HM Stationery Office. Crown Copyright Reserved. © OS Licence No. 0100031673

Notes:

Status:  
Deadline 6 Update

Onshore Coordinate System  
Datum: OSGB 1936  
Spheroid: Airy 1830  
Projection: British National Grid  
Central Meridian: 2 W  
Vertical Reference: Newlyn



Outer Dowsing Offshore Wind  
2.6 Crown Land Plans Onshore V4  
DCO Application

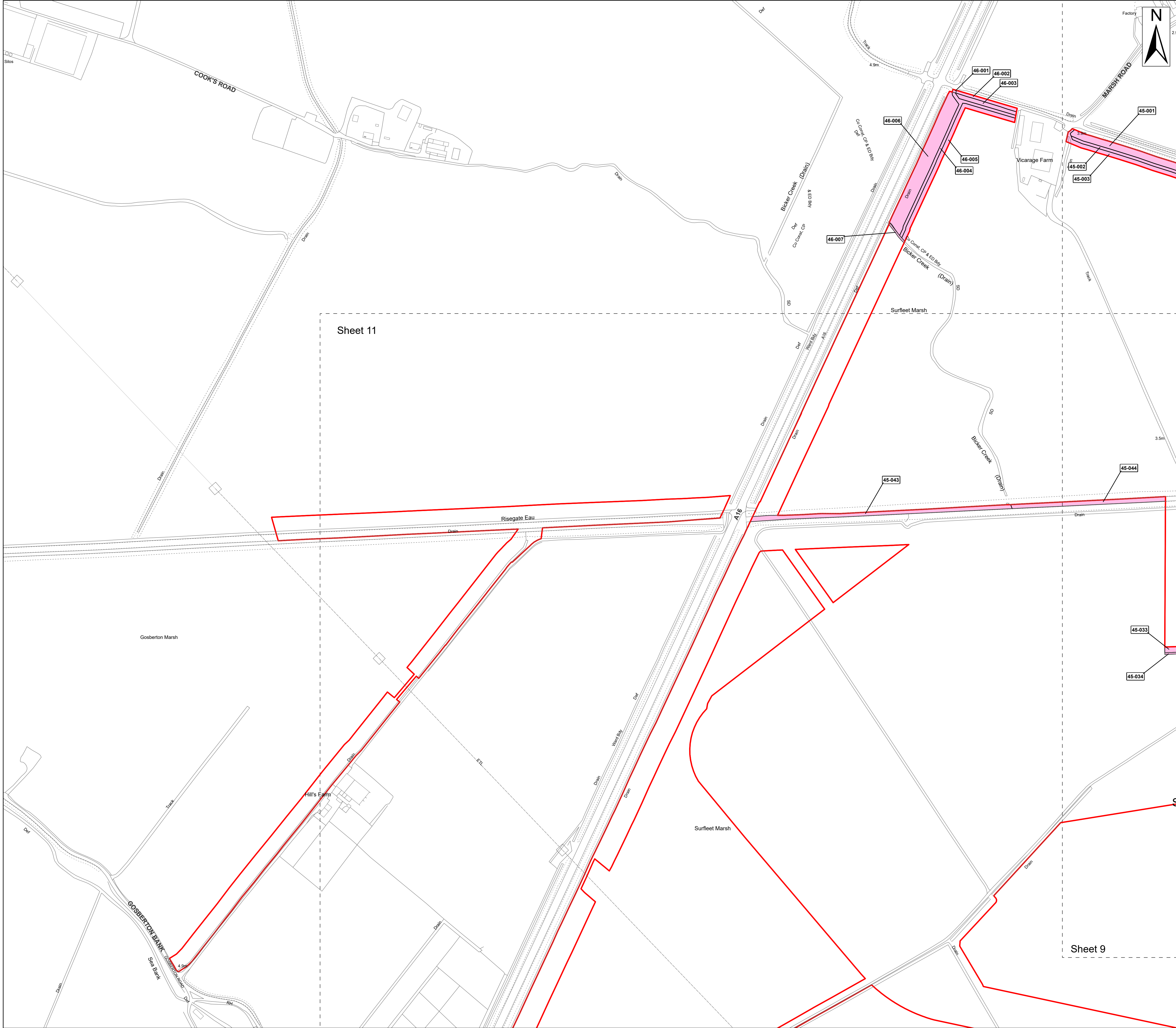
Drawing No: PP1-ODOW-DEV-CS-MAP-0006\_04

Drawing: 9 of 11			Page Size: A1		
Rev No:	Date	Description	Drawn	Checked	Approved
1.0	March 2024	DCO Application Version	RT	DM/ODOW	ODOW
2.0	July 2024	Response to Section 51 Advice	RT	DM/ODOW	ODOW
3.0	Sept 2024	Response to Rule 17 Letter	WP	DM/ODOW	ODOW
4.0	April 2025	Deadline 6	WS	DM/ODOW	ODOW



This document may only be used for the purpose for which it was commissioned and in accordance with the terms of engagement for that commission. Unauthorised use of this document in any form whatsoever is prohibited.





Legend

Order Limits

The King's Most Excellent Majesty In Right Of His Crown

Source:

Contains Esri Community Maps Contributors, Esri UK, Esri, TomTom, Garmin, GeoTechnologies, Inc, METI/NASA, USGS, Esri UK, Esri, TomTom, Garmin, GeoTechnologies, Inc, METI/NASA, USGS. Based upon the Ordnance Survey Map with the sanction of the controller of HM Stationery Office. Crown Copyright Reserved. © OS Licence No. 0100031673

Notes:

Status:

Deadline 6 Update

Onshore Coordinate System

Datum: OSGB 1936

Spheroid: Airy 1830

Projection: British National Grid

Central Meridian: 2 W

Vertical Reference: Newlyn

00.050.10.150.20.25

km

Scale: 1:2,500

Outer Dowsing Offshore Wind

2.6 Crown Land Plans Onshore V4

DCO Application

Drawing No: PP1-ODOW-DEV-CS-MAP-0006\_04

Drawing: 10 of 11

Page Size: A1

Rev No:	Date	Description	Drawn	Checked	Approved
1.0	March 2024	DCO Application Version	RT	DM/ODOW	ODOW
2.0	July 2024	Response to Section 51 Advice	RT	DM/ODOW	ODOW
3.0	Sept 2024	Response to Rule 17 Letter	WP	DM/ODOW	ODOW
4.0	April 2025	Deadline 6	WS	DM/ODOW	ODOW

This document may only be used for the purpose for which it was commissioned and in accordance with the terms of engagement for that commission. Unauthorised use of this document in any form whatsoever is prohibited.



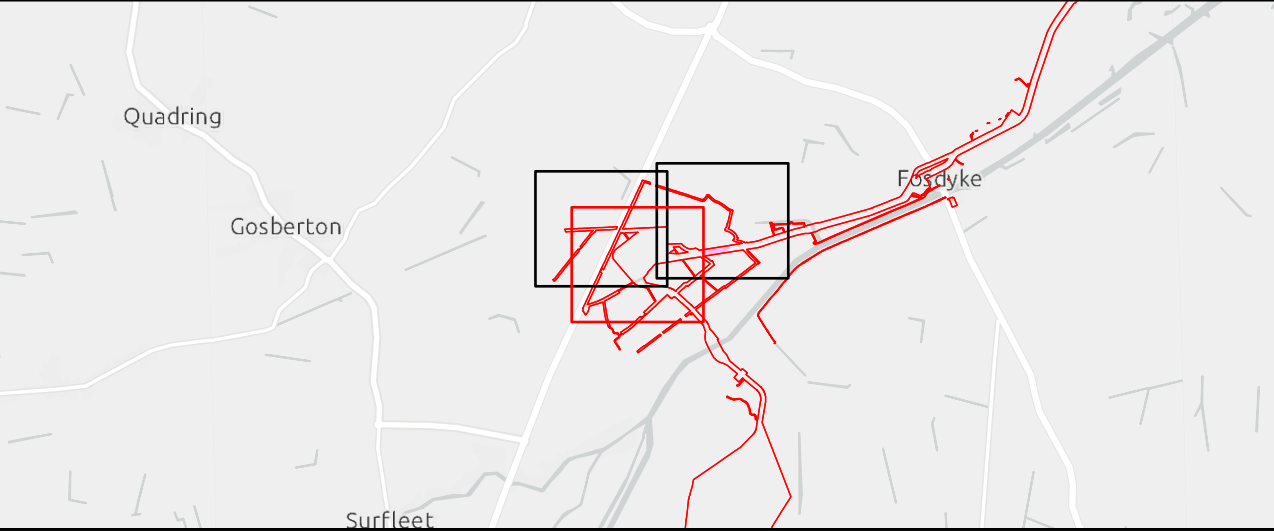
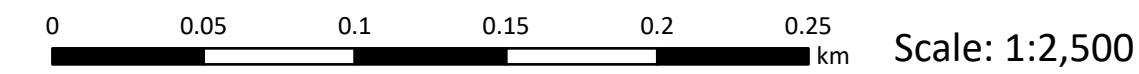


- Legend
- Order Limits
  - The King's Most Excellent Majesty In Right Of His Crown

Source:  
Contains Esri Community Maps Contributors, Esri UK, Esri, TomTom, Garmin, GeoTechnologies, Inc, METI/NASA, USGS, Esri UK, Esri, TomTom, Garmin, GeoTechnologies, Inc, METI/NASA, USGS.  
Based upon the Ordnance Survey Map with the sanction of the controller of HM Stationery Office. Crown Copyright Reserved. © OS Licence No. 0100031673

Notes:	Status: Deadline 6 Update
--------	------------------------------

Onshore Coordinate System  
Datum: OSGB 1936  
Spheroid: Airy 1830  
Projection: British National Grid  
Central Meridian: 2 W  
Vertical Reference: Newlyn



Outer Dowsing Offshore Wind  
2.6 Crown Land Plans Onshore V4  
DCO Application

Drawing No: PP1-ODOW-DEV-CS-MAP-0006\_04

Drawing: 11 of 11			Page Size: A1		
Rev No:	Date	Description	Drawn	Checked	Approved
1.0	March 2024	DCO Application Version	RT	DM/ODOW	ODOW
2.0	July 2024	Response to Section 51 Advice	RT	DM/ODOW	ODOW
3.0	Sept 2024	Response to Rule 17 Letter	WP	DM/ODOW	ODOW
4.0	April 2025	Deadline 6	WS	DM/ODOW	ODOW



This document may only be used for the purpose for which it was commissioned and in accordance with the terms of engagement for that commission. Unauthorised use of this document in any form whatsoever is prohibited.